

marushin®



smokehouse.fi
THEM products oy

Spirit of the Samurai



Distributor Catalogue 2022



www.marushin.de



Est. 1958

Over 60 Years of Protection SPIRIT OF THE SAMURAI

TOKYO: In the year 1958, the successful story of "**MARUSHIN HELMETS**" began with the founding of a small company by Watanabe Shin for the production of motorcycle helmets. In 2018 **MARUSHIN®** celebrated its 60th anniversary.

Shin's entrepreneurial vision was marked by a strong sense of quality and ongoing innovation, the typical drivers of rising Japan. By combination of Watanabe's first name „Shin“ – which means „reliable and steadfast“ and the Japanese word for circle – „Maru“ the name „Marushin“ was created. Maru was the protective circle around the head of Mr. Shin and **MARUSHIN** was a perfectly fitting name for a helmet brand born in Japan. This Maru should also protect the customers of **MARUSHIN** and, in combination with the latest technology, provide protection against bad luck.

In the beginning, **MARUSHIN** helmets were only distributed in Japan, where it is a tradition to not say a lot about special achievements.

Anyway, not at this point, let's make clear: **MARUSHIN** offers products with an impressive price-performance ratio. Be aware that our innovative helmets were assembled by hand with the highest quality of workmanship possible.

For more than 60 years now, **MARUSHIN** helmets fulfill the highest demands of motorcyclists all over the world.

You are looking for maximum comfort, for highest standards of safety and you always want to drive one of the lightest helmets in its class?

Then **MARUSHIN** is also your first choice. Japanese perfection combined with German engineering – this is how **MARUSHIN** meets the highest quality standards today.

Marushin guarantees 5 Years of Quality for Premium Line Helmets

further information see www.marushin.de

enjoy our catalogue

smokehouse.fi
THE products by



www.marushin.de

A close-up, low-angle shot of a black and grey Marushield 999 RS motorcycle helmet. The helmet features a large, clear visor and a prominent 'marushield' logo in white and black on the side. The text '999 RS' is also visible on the side. The background is a plain, light color.

Premium Line

**5 Years Quality
Guarantee**



999 RS Comfort

Since many years the 999 RS is the most popular model in the Marushin product line. It could win a vast number of prizes and awards in product tests by domestic and international motorcycle magazines. Marushin continues that tradition with the newly developed 999 RS Comfort. The internal sun visor, a shield with a new quick removal mechanism and Pinlock®-preparation, a temperature and moisture regulating inner liner or the Marushin ratchet chin strap lock are only a few features, that assure also the 999 RS Comfort is an all-rounder when it comes to comfort, safety and functionality.

Features

- Emergency-Strap-System
- improved moisture absorption and fast drying - reduced bacteria build-up or odour formation
- cheek and center pads easy to remove and washable 100 % Polyester
- Marushin®-Cool inner liner
- newly developed cheek pads with perfect fitting even at high speed
- adjustable chin- and cheek ventilation
- easy handling of ventilation
- removable wind deflector
- removable breath deflector
- Easy to use with glasses
- all levers can easily be used with gloves on
- Micro-ratchet chin strap lock made of stainless steel
- UV-protected by lacquer
- Prepared for intercom installation
- emergency-Strap-System

Material

- aerodynamically optimized fiberglass shell
- shell in two size

Visor

- clear
- anti-scratch
- UV-protection
- Pinlock®-prepared
- quick and easy replacement, no tools needed
- internal sun visor

Colors

- Shaox-black/silver (9056 2103 + Size)
- Space white/grey (9056 2102 + Size)
- Laser grey-black (8056 2101 + Size)
- Laser red-white (8056 2100 + Size)
- flatblack (8056 2022 + Size)



www.motorradundreisen.de

Motorrad und Reisen Heft 100 August/September 2020

Marushin guarantees 5 Years of Quality



Weight : ca.1.350 g (+/- 50 g)

Homologation : ECE 22/05

Size : XS – XXL

www.marushin.de

marushin®



999 RS SPACE



999 RS SHAOX



329€



smokehouse.fi
THEV products by

Marushin guarantees 5 Years of Quality



Weight : ca.1.350 g (+/- 50 g)

Homologation : ECE 22/05

Size : XS – XXL

www.marushin.de

MARUSHIN®



**999 RS Laser
red/white**



**Quick Change
of Visor**



299€

Laser grey/black

smokehouse.fi
THE products of

Marushin guarantees 5 Years of Quality



Weight : ca.1.350 g (+/- 50 g)

Homologation : ECE 22/05

Size : XS – XXL

www.marushin.de

MARUSHIN®



999 RS
flatblack
299€



**Stainless steel
strap lock**



**Emergency
Strap System**

smokehouse.fi
THEV products oy

Marushin guarantees 5 Years of Quality



Weight : ca.1.350 g (+/- 50 g)

Homologation : ECE 22/05

Size : XS – XXL

www.marushin.de



RS3 – Full Face Sport

Part of the Marushin product line for only one year but already a bestseller, which is recommended by sport riders and journalists equally. With the RS3 Marushin purposely renounces gimmicks and unnecessary features and concentrates completely on what matters when it comes to riding a bike. The superlight RS3 is everything a sports rider needs to enjoy his passion.

Features

- Emergency-Strap-System
- improved moisture absorption and fast drying - reduced bacteria build-up or odour formation
- cheek and center pads easy to remove and washable 100 % Polyester
- Marushin®-Cool inner liner
- newly developed cheek pads with perfect fitting even at high speed
- adjustable chin- and cheek ventilation
- easy handling of ventilation
- all levers can easily be used with gloves on
- removable wind deflector
- removable breath deflector
- Easy to use with glasses
- Double-D chin strap lock made of stainless steel - mandatory in international race series
- UV-protected by lacquer
- prepared for intercom installation

Material

- aerodynamically optimized fiberglass shell
- shell in two size

Visor

- clear
- anti-scratch
- UV-protection
- Pinlock®-prepared
- quick and easy replacement, no tools needed



Color

- flatblack (8500 1001+Size)
- Techno white-grey (8500 1103 + Size)
- Techno black Fluo yellow (85001102+Size)
- Samurai flatgrey (8500 1101 + Size)
- Samurai red-white (8500 1100 + Size)



Marushin guarantees 5 Years of Quality



Weight : ca.1.290 g (+/- 50 g)

Homologation : ECE 22/05

Size : XS – XXL

www.marushin.de

marushin®



RS3 Techno



Standard set with clear visor



white / grey



319€

**black
fluor yellow**

smokehouse.fi
THEMproducts oy

Marushin guarantees 5 Years of Quality



Weight : ca.1.290 g (+/- 50 g)

Homologation : ECE 22/05

Size : XS – XXL

www.marushin.de

marushin®



RS3
Samurai



red-white



flatgrey 299€

Standard set with clear visor

smokehouse.fi
THE products by

Marushin guarantees 5 Years of Quality



www.marushin.de

marushin®



RS3 flatblack



279€



Double-D chin strap

Emergency Strap System

smokehouse.fi
THEM products oy

Marushin guarantees 5 Years of Quality



Weight : ca. 1.290 g (+/- 50 g)

Homologation : ECE 22/05

Size : XS – XXL

www.marushin.de



M-410 Flip-Up

M-410 Carbon

The Japanese cult brand Marushin looks back on a long tradition of manufacturing super light fibreglass helmets. So it is no surprise that the newest top model in the category of system helmets is also following that tradition. The result is the completely new M-410. With a record-breaking weight of just 1.500 g (+/- 50 g) Marushin once again managed to set standards. Its compact outer shell, a new temperature and moisture regulating inner liner, the Pinlock®-prepared visor or the Marushin ratchet chin strap lock made of stainless steel are only a few among many features, which will make the M-410 one of the best-liked system helmets for sportive touring riders.

Features

- Emergency-Strap-System
- improved moisture absorption and fast drying - reduced bacteria build-up or odour formation
- cheek and center pads easy to remove and washable 100 % Polyester
- Marushin®-Cool inner liner
- newly developed cheek pads with perfect fitting even at high speed
- adjustable chin- and cheek ventilation
- easy handling of ventilation
- all levers can easily be used with gloves on
- removable wind deflector
- removable breath deflector
- Easy to use with glasses
- Micro-ratchet chin strap lock made of stainless steel
- UV-protected by lacquer
- Prepared for intercom installation

Material

- Fibreglas-Helmschale / Carbon-Shell
- aerodynamically optimized fiberglass shell
- shell in two size

Visor

- clear
- anti-scratch
- UV-protection
- Pinlock®-prepared
- quick and easy replacement, no tools needed
- internal sun visor

Color

- Carbon (8455 9000 + Size)
- flatblack (8455 3000 + Size)
- silver (8455 3070 + Size)
- shining white (8455 3051 + Size)
- Loop flatblack fluo yellow (8455 3150 + Size)
- Guardian black/grey/white (8455 3100 + Size)

Marushin guarantees 5 Years of Quality



Weight : ca. 1.550 g (+/- 50 g)

Homologation : ECE 22/05

Size : XS – XXL

www.marushin.de

marushin®



M-410 Loop



NEW

349€

M-410 Guardian



NEW



smokehouse.fi
THEVproducts oy

Marushin guarantees 5 Years of Quality



Weight : ca. 1.550 g (+/- 50 g)

Homologation : ECE 22/05

Size : XS – XXL

www.marushin.de

MARUSHIN®



M-410 Flip-Up



NEW

**shining
white**

299€



silver



flatblack

Standard set with clear visor

smokehouse.fi
THE products of

Marushin guarantees 5 Years of Quality



Weight : ca. 1.550 g (+/- 50 g)

Homologation : ECE 22/05

Size : XS – XXL

www.marushin.de

marushin®



M-410 Carbon

NEW



399€



Standard set with clear visor

smokehouse.fi
THE products of

Marushin guarantees 5 Years of Quality



PINLOCK
PREPARED 70

Weight : ca. 1.550 g (+/- 50 g)

Homologation : ECE 22/05

Size : XS – XXL

www.marushin.de



M-610 open face

Although riding enjoyment and the reduction to the necessary are the primary features of the M-610, our engineers put an emphasis on safety and comfort as well. That is why the M-610 does not only score with its newly developed temperature and moisture regulating inner liner, but also with its record-breaking weight of only 1.250 g (+/- 50 g) and its compact outer shell.

Features

- improved moisture absorption and fast drying - reduced bacteria build-up or odour formation
- cheek and center pads easy to remove and washable 100 % Polyester
- Marushin®-Cool inner liner
- completely overhauled and wind tunnel optimized ventilation with better air flow into the helmet through multiple in- and outlets
- all levers can easily be used with gloves on
- easy handling of ventilation
- Easy to use with glasses
- Micro-ratchet chin strap lock made of stainless steel
- UV-protected by lacquer
- Prepared for intercom installation

Material

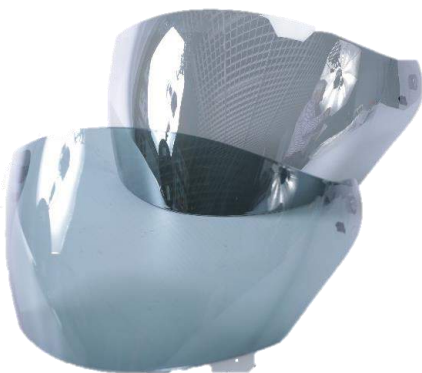
- aerodynamically optimized fiberglass shell
- shell in two size

Visor

- clear
- anti-scratch
- UV-protection
- Pinlock®-prepared
- quick and easy replacement, no tools needed
- internal sun visor

Color

- black (8681 2222 + Size)
- white (8681 2050 + Size)
- flatblack (8681 2020 + Size)



Quick Change of Visor w/o tools

Marushin guarantees 5 Years of Quality



Weight : ca. 1.250 g (+/- 50 g)

Homologation : ECE 22/05

Size : XS – XXL

www.marushin.de

marushin®



M-610 Open Face

189€

NEW

black



flatblack



white

Standard set with clear visor

smokehouse.fi
THEM products by

Marushin guarantees 5 Years of Quality



Weight : ca. 1.250 g (+/- 50 g)

Homologation : ECE 22/05

Size : XS – XXL

www.marushin.de



C-149 Open Face

A helmet, reduced to the minimum, with full comfort, many features and of course, without any safety limitations, that is the Marushin C-149. As one of the newest members of our Premium Line, the C-149 is a hit - of course in the well-known Marushin quality, with a weight of only 990 g (+/- 50g) and with efficient ventilation, built-in sun visor and panoramic field of view. A helmet, not only for all chopper and bobber drivers or for trips into the city, but for all trips with fun and spirit.

Features

- Comfort Inner Liner - 100 % Polyester
- Marushin®-Cool inner liner
- Easy to use with glasses
- Micro-ratchet chin strap lock made of stainless steel
- UV-protected by lacquer
- Prepared for intercom installation

Material

- aerodynamically optimized fiberglass shell
- shell in two size

Visor

- clear
- anti-scratch
- UV-protection
- Panorama view
- quick and easy replacement, no tools needed
- internal sun visor

Color

- flatblack (8685 2000 + Size)
- flatgrey (8685 2001 + Size)
- white (8685 2050 + Size)



smokehouse.fi
THEM products oy

Marushin guarantees 5 Years of Quality



Weight : ca. 990 g (+/- 50 g)

Homologation : ECE 22/05

Size : XS – XXL

www.marushin.de

marushin®



C-149 Open Face



NEW

white

169€



flatblack



flatgrey

Marushin guarantees 5 Years of Quality



smokehouse.fi
THEM products oy

Weight : ca. 990 g (+/- 50 g)

Homologation : ECE 22/05

Size : XS – XXL

www.marushin.de



C-131 – Open Face

What else can we tell about a helmet that every motorcyclist knows? Perhaps that it is light, 850g (+/-50g), has the widest field of view of all Marushin helmets, stands for classic driving enjoyment and, of course, all of that without any safety limitations? Well, we will not try.

Features

- Comfort Inner Liner - 100 % Polyester
- Marushin®-Cool inner liner
- Easy to use with glasses
- Micro-ratchet chin strap lock made of stainless steel
- UV-protected by lacquer

Material:

- aerodynamically optimized fiberglass shell
- shell in two size

Color

- flatblack (8682 2000 + Size)
- flatblack/orange (8682 1000+Size)
- flatgrey/orange (8682 1004 + Size)
- blue/orange (8682 1003 + Size)
- shining white (8682 2050 + Size)

smokehouse.fi
THEM products oy



Create your own design

Marushin guarantees 5 Years of Quality



Weight : ca. 850 g (+/- 50 g)

Homologation : ECE 22/05

Size : XS – XXL

www.marushin.de

marushin®



C-131 Open Face



flatgr/orange



blue/orange

169€



shining white



flatbl/orange



flatblack



flatblack

Marushin guarantees 5 Years of Quality



smokehouse.fi
THEVproducts oy

Weight : ca. 850 g (+/- 50 g)

Homologation : ECE 22/05

Size : XS – XXL

www.marushin.de



Marushin®

**Erweiterte 5-Jahres-Qualitätsgarantie
auf alle Marushin Premium-Line-Helme**

MOTORRAD & REISEN

Toptipp ★ ★ ★ ★ ★

Marushin 999 RS Integralhelm

Ausgabe Nr. 100/2020

MOTORRAD & REISEN

sehr gut



**Exklusiv
hier!**



Marushin RS3 Integralhelm

Ausgabe Nr. 104/2021

MOTORRAD & REISEN

gut



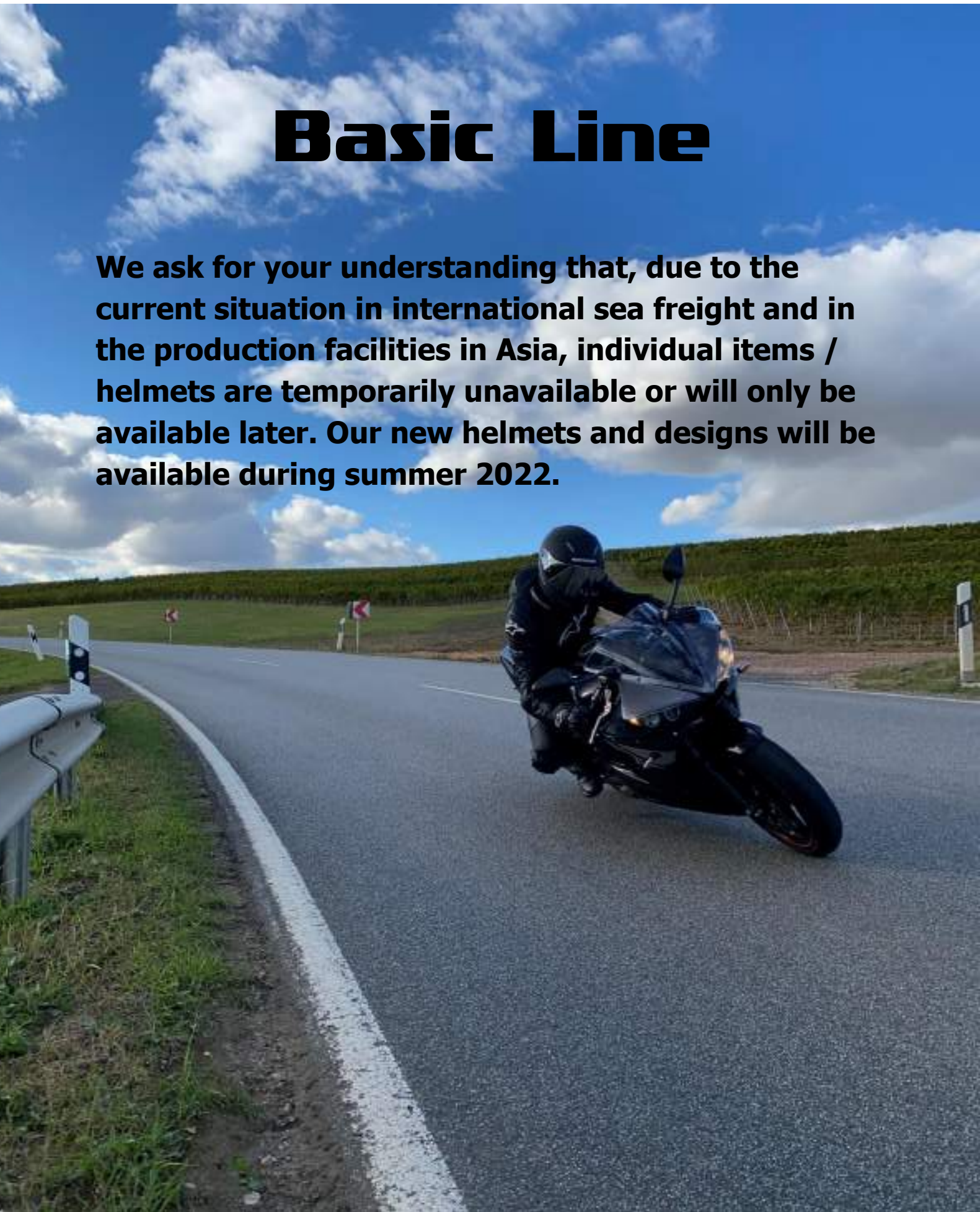
Marushin 999 RS Comfort	
UNP: ab 279,- Euro Größen: XS - XXL	
Passgenaue Form/Tragkomfort	17/20
<ul style="list-style-type: none"> Größe fällt normal aus bequeme Passform trotz schmalen Sitz weiches Innenfutter Platz für Brillenbügel Sonnenvisier bedeckt die Brille 	
Material/Verarbeitung	16/20
<ul style="list-style-type: none"> innen hochwertig der Kunststoff von Belüftungen und Sonnenvisier ist "Jalgi" 	
Sicherheit	10/10
<ul style="list-style-type: none"> Schulter-Ratchetverschluss aus Edelstahl herausziehbare Notfall-Ablenklippen 	
Windgeräusche	13/15
<ul style="list-style-type: none"> relativ leise 	
Gewicht	8/10
1,425 Gramm in Größe XL	
Ausstattung	15/15
<ul style="list-style-type: none"> anstellbare Innenfutter Heringsknochen herausnehmbar und waschbar innenliegende Sonnenvisier Helmkappe aus Fiberglas 	
Belüftung/Beschlag	10/10
<ul style="list-style-type: none"> vorbezieht für Rinne-Visier effektive Belüftung mit Handflächen sicher zu bedienen 	
M&R	sehr gut 95/100

Marushin RS3	
UNP: ab 279,- Euro Größen: XS - XXL	
Passgenaue Form/Tragkomfort	18/20
<ul style="list-style-type: none"> Größe fällt normal aus (XS) stift (stärkender) Wölbungsform weiches Futter relativ leicht 	
Material/Verarbeitung	10/20
<ul style="list-style-type: none"> Fiberglas hochwertig verarbeitetes Innenfutter matte Oberfläche ist kratzempfindlich relativ einfacher Sitz nach dem Helm ausgezeichnete Kunststoffteile der Belüftung sind sehr leicht zu bedienen 	
Sicherheit	7/10
<ul style="list-style-type: none"> Notfall-Ablenklippen Doppel-Öffenschlüssel Reflektor am Nackenposten im Helm (schwarze Farbe) 	
Windgeräusche	15/15
<ul style="list-style-type: none"> sehr leise, auch in Luftangabe der Vögel ausgezeichnet auch bei hohen Geschwindigkeiten 	
Gewicht	8/10
1,315 Gramm Größe XL	
Ausstattung	15/15
<ul style="list-style-type: none"> Perfekt Schnellwechselmechanik für Visier Wendelknoten am Helm Reflektor herausnehmbar und waschbar Belüftung im Helm für den Helm von Kommando 	
Belüftung/Beschlag	8/10
<ul style="list-style-type: none"> Effektive Belüftung des Visiers sehr effektive Belüftung mit Polster/Visier 100% beschlagfrei Schädel der Belüftung liegt innen 	
M&R	gut 81/100



Basic Line

We ask for your understanding that, due to the current situation in international sea freight and in the production facilities in Asia, individual items / helmets are temporarily unavailable or will only be available later. Our new helmets and designs will be available during summer 2022.





M-FH-3 Features

Features

- Micrometric buckle
- Quadruple density internal shell
- Multiple ventilations - air nets and anti-insect foam
- Interior 100% removable and washable - 100 % Polyester
- Morpho System Plus
(cheeks and head pads available in your size
- Flexible nose deflector
- Flexible removable chin curtain
- Prepared for intercom installation
- Specific helmet bag

Visor

- clear
- anti-scratch
- Pinlock® prepared
- quick and easy replacement, no tools needed
- internal sun visor
- Multi compressible visor seal

Color

- Pitbull3 Black/Red White (8601 2101+ Size)
- Fighter Black/Yellow Fluo/matt (86012102 + Size)
- flat black (8601 2001 + Size)

Material

- Technopolymer injected shell
- aerodynamically optimized shell
- shell in two size



Weight : ca.1.450 g (+/- 50 g)

Homologation : ECE 22/05

Size : XS – XXL

marushin®



M-FH-3 flat black



149€

smokehouse.fi
THEVproducts oy



Weight : ca.1.450 g (+/- 50 g)

Homologation : ECE 22/05

Size : XS – XXL

www.marushin.de

MARUSHIN®



M-FH-3 Pitbull



189€

**M-FH3-Pitbull Black
Red White**



smokehouse.fi
THEVIproducts oy



Weight : ca.1.450 g (+/- 50 g)

Homologation : ECE 22/05

Size : XS – XXL

www.marushin.de

MARUSHIN®



M-FH-3 Fighter

189€



smokehouse.fi
THE products by

M-FH3-Fighter

Yellow Fluo - Flat black



Weight : ca.1.450 g (+/- 50 g)

Homologation : ECE 22/05

Size : XS - XXL

www.marushin.de



MH-6 Features

Features

- Micrometric buckle
- Quadruple density internal shell
- Multiple ventilations - air nets and anti-insect foam
- Interior 100% removable and washable 100 % Polyester
- Morpho System Plus (cheeks and head pads available in your size)
- Flexible nose deflector
- Flexible removable chin curtain
- Prepared for intercom installation
- Specific helmet bag

Material

- Technopolymer injected shell
- aerodynamically optimized shell

Visor

- Panorama view
- clear
- anti-scratch
- Pinlock® prepared
- quick and easy replacement, no tools needed
- internal sun visor
- Easy one-hand opening system

Color

- MH-6 flat black (8650 2002 + Size)
- MH-6 white glossy (8650 2001 + Size)
- MH-6 Light black/red fluo (8650 2101 + Size)
- MH-6 - Light black/yellow fluo (8650 2201 + Size)



Weight : ca.1.600 g (+/- 50 g)

Homologation : ECE 22/05

Size : XS – XXL

marushin®



MH-6



179€

flat black



white glossy



smokehouse.fi
THE V products oy

PINLOCK
PREPARED 70



Weight : ca.1.600 g (+/- 50 g)

Homologation : ECE 22/05

Size : XS – XXL

www.marushin.de

marushin®



MH-6 Light black/red fluo



199€



smokehouse.fi
THEMproducts oy



Weight : ca.1.600 g (+/- 50 g)

Homologation : ECE 22/05

Size : XS – XXL

www.marushin.de

marushin®



MH-6 Light bl/yellow fluo



199€



smokehouse.fi
THEVproducts oy

PINLOCK®
PREPARED 70

Weight : ca.1.600 g (+/- 50 g)

Homologation : ECE 22/05

Size : XS – XXL

www.marushin.de



M-JH-7 Features

Features

- Interior 100% removable and washable
100 % Polyester
- 4 ventilations
- Micrometric buckle
- Neckrol

Material

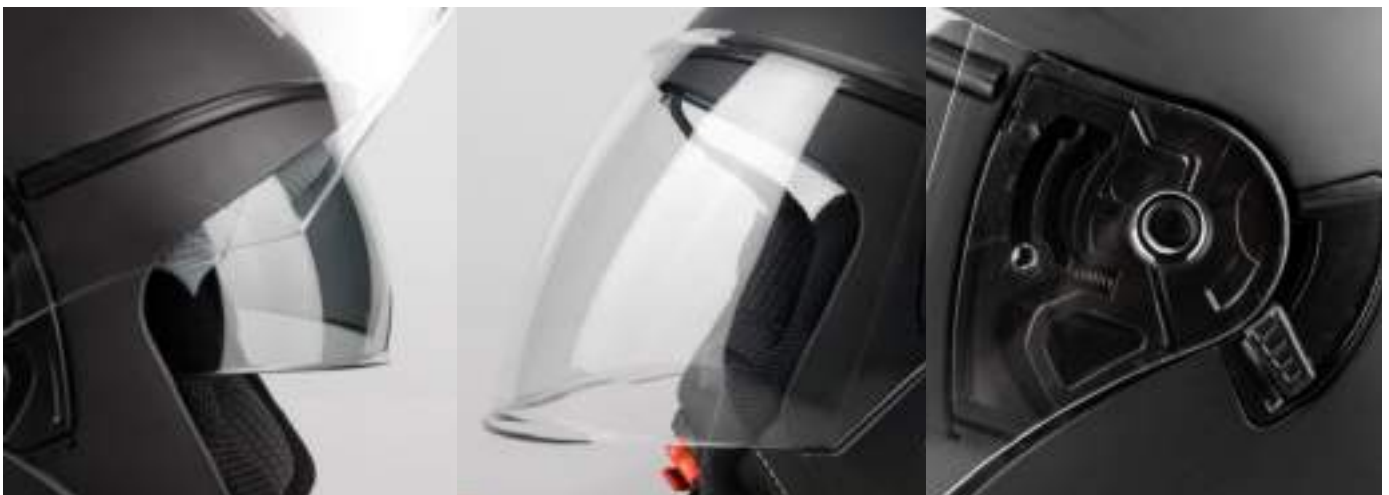
- Technopolymer injected shell
- Double density internal shell
- aerodynamically optimized shell

Visor

- clear
- anti-scratch
- UV-protected
- quick and easy replacement, no tools needed
- internal sun visor
- Easy one-hand opening system

Color

- flat black (8700 2000 + Size)
- white (8700 2001 + Size)



Weight : ca.1.050 g (+/- 50 g)

Homologation : ECE 22/05

Size : XS – XL

marushin®



M-JH-7



flat black

129€



white



smokehouse.fi
THEV products oy

Weight : ca.1.050 g (+/- 50 g)

Homologation : ECE 22/05

Size : XS – XL

www.marushin.de



M-310 Flip-Up

Marushin Basic Line - Using the most modern manufacturing processes, we have succeeded in developing a system helmet in the usual Marushin quality for price-conscious touring riders. The system helmet M-310 is made of the latest generation of particularly lightweight plastic. Thanks to the comfortable fit and the integrated sun visor, the M-310 is the first choice for every journey.

Features

- cheek and center pads easy to remove and washable 100 % Polyester
- Marushin®-Comfort inner liner
- newly developed cheek pads with perfect fitting
- easy handling of ventilation
- all levers can easily be used with gloves on
- removable wind deflector
- removable breath deflector
- Easy to use with glasses
- Micro-ratchet chin strap lock
- UV-protected by lacquer
- Prepared for intercom installation

Material

- aerodynamically optimized shell - high-strength material

Visor

- clear
- anti-scratch
- UV-protection
- Pinlock®-prepared
- quick and easy replacement, no tools needed
- internal sun visor

Color

- flat black (8650 1001 + Size)
- silver (8650 1003 + Size)



Weight : ca. 1.550 g (+/- 50 g)

Homologation : ECE 22/05

Size : limited availability

marushin®



M-310 Flip Up



159€

flatblack



smokehouse.fi
THEVIproducts oy



Weight : ca. 1.550 g (+/- 50 g)

Homologation : ECE 22/05

Size : limited availability

www.marushin.de



C-600 Open Face

The state of the art C 600 open face helmet comes from our Basic Line. Comfortable fit, sun visor and large visor are special features of the C-600, made from a particularly lightweight plastic of the latest generation. Marushin quality and safety are a must have for safety / price-conscious motorcyclist.

Features

- cheek and center pads easy to remove and washable 100 % Polyester
- Marushin®-Comfort inner liner
- newly developed cheek pads with perfect fitting
- easy handling of ventilation
- all levers can easily be used with gloves on
- Easy to use with glasses
- Micro-ratchet chin strap lock
- UV-protected by lacquer
- Prepared for intercom installation

Material

- aerodynamically optimized shell - high-strength material

Visor

- clear
- anti-scratch
- UV-protection
- quick and easy replacement, no tools needed
- internal sun visor

Color

- flat black (8700 1001 + Size)
- silver (8700 1004 + Size)



Weight : ca. 1.250 g (+/- 50 g)

Homologation : ECE 22/05

Size : limited availability

marushin®



C-600 Open Face



flatblack



Weight : ca. 1.250 g (+/- 50 g)



Homologation : ECE 22/05



Size : limited availability

www.marushin.de



889 Comfort

Do high-quality brand helmets need to be expensive? We at Marushin disagree. Through the use of state-of-the-art manufacturing processes, we have succeeded in developing the Marushin Basic Line. Well known Marushin quality and safety is now available by Marushin for every motorcyclist. The state of the art full face thermoplastic (high-strength material composition) helmet 889 is extremely lightweight. The comfortable fit and the integrated sun visor make it the first choice for the safety / price-conscious motorcycle rider.

Features

- cheek and center pads easy to remove and washable 100 % Polyester
- Marushin®-Comfort inner liner
- newly developed cheek pads with perfect fitting even at high speed
- easy handling of ventilation
- all levers can easily be used with gloves on
- removable wind deflector
- removable breath deflector
- Easy to use with glasses
- Micro-ratchet chin strap lock
- UV-protected by lacquer
- Prepared for intercom installation

Material

- aerodynamically optimized shell - high-strength material composition

Visor

- clear
- anti-scratch
- UV-protection
- Pinlock®-prepared
- quick and easy replacement, no tools needed
- internal sun visor

Color

- flat black (8601 1001 + Size)
- Warrior flat black (8601 1101 + Size)



Weight : ca. 1450 g (+/- 50 g)

Homologation : ECE 22/05

Size : limited availability



marushin®



889
Warrior
flat black



889
Comfort
flat black

Weight : ca. 1450 g (+/- 50 g)

Homologation : ECE 22/05

Size : limited availability



PINLOCK®
PREPARED **70**

www.marushin.de



Beyond helmets ...

Marushin Services

- ✓ **Training and Support**
- ✓ **Marushin CSB EDP Integration**
- ✓ **Supporting your Shop-Concept**
- ✓ **Promotion and Pictures**
- ✓ **Your Link on marushin.de**
- ✓ **Give-Aways - Merchandise and Marketing**
- ✓ **48h shipment**
- ✓ **Marushin supports your event**



wind deflector, removable



Shell made of A B S



Fiberglas shell



cheek and center pads easy to remove



UV-protected by lacquer



Double-D chin strap lock



Replacement of visor without tools



wind deflector at chin



Two size of shell

Spirit of the Samurai



Marushin Visor / Helmet Matrix



Item No.	Visor / Pinlock	999 RS	RS3	M 410	M 610	M-FH-3	889	MH-6	M 310	JH 7	C 600
		Full Face	FlipUp	Jet	Full Face	Flip-Up	Open Face				
8500 1000 1000	NX-Evo visor, clear	X	X								
8500 1010 1000	NX-Evo visor, spectra silver	X	X								
8500 3000 1000	NX-Evo visor, dark smoke	X	X								
8100 9999 9000	Pinlock sheet for NX-Evo visor, clear	X	X								
8510 1000 1000	Jet-Evo visor, clear			X							
8510 1010 1000	Jet-Evo visor, spectra silver			X							
8510 3000 1000	Jet-Evo visor, dark smoke			X							
8501 1000 1000	NZ-A visor, clear					X					
8503 1000 1000	NZ-B visor, clear								X		
8503 3000 1000	NZ-B visor, dark smoke								X		
8502 1000 1000	NZ-C visor, clear										X
8502 3000 1000	NZ-C visor, dark smoke										X
8100 9999 9002	Pinlock sheet for NZ visors, clear, NZ-A & NZ-B						X				
8601 1000 1000	FH3 FullVision AS/PR (Clear)					X					
8601 3000 1000	FH3 FullV AS/PR Tinted 80%					X					
8601 1020 1000	FH3 FullV AS/PR Silver Mirror					X					
8100 9999 3000	Pinlock Lens FullVision DKS278 RAFALE / FH3					X					
8602 1000 1000	MH6 AS/PR DKS002 (Clear)							X			
8602 3000 1000	MH6 AS/PR DKS002 (Tinted)							X			
8100 9999 6000	Pinlock Lens MH6 / RAFALE/MH2/ (DKS002) Clear							X			
8602 1000 1010	JH7 - AS Clear									X	

[illegible]



Section 1 - Scope of application,

Marushin Helmets GmbH - General Terms & Conditions

(1) The general terms and conditions (hereinafter **T&Cs**) apply to all of our business relationships with our customers ("Buyer"). The T&Cs only apply if the Buyer is an entrepreneur within the meaning of Section 14 German Civil Code, is a legal entity under public law, or is a special fund under public law.

(2) These T&Cs particularly apply to contracts concerning the sale of and/or delivery of moveable goods ("goods"), regardless of whether we manufacture the goods ourselves or acquire them from suppliers (Sections 433, 651 German Civil Code). The T&Cs constitute a framework agreement - also for similar future contracts - applicable in the version valid at the time the Buyer places an order or in any case, in the last written or electronic form shared, without us being required to refer you to them on a case-by-case basis; we will inform the Buyer of any changes to the T&Cs without undue delay.

(3) Our T&Cs apply exclusively. The Buyer's deviating, contradictory or supplementary general terms and conditions shall not form an integral part of the contract unless we explicitly agree to their application. This requirement for consent shall also apply, for example, even if we make deliveries to you unconditionally with knowledge of the Buyer's T&Cs.

(4) Individual agreements made with the Buyer on a case-by-case basis (including subsidiary agreements, supplements and amendments) take priority over these T&Cs. Subject to evidence to the contrary, a written contract or our written confirmation determines the content of such agreements.

(5) The Buyer must provide legally relevant declarations and indications concerning the contract (e.g. setting deadlines, providing notification of any defects, withdrawal or mitigation) in writing or electronically (e.g. letter, e-mail, fax). Legal formalities and other evidence, with particular reference to doubts about the authorisation of the person making declarations, shall remain unaffected.

(6) References to the validity of legal provisions are only significant for the purposes of making declarations. Therefore, legal provisions apply without such a clarification being made, provided that they are not specifically altered or expressly excluded from these T&Cs.

Section 2 - Conclusion of the contract

(1) Our offers are subject to alteration and are non-binding. This shall also apply if we have given the Buyer catalogues, technical documentation (e.g. designs, calculations, references to DIN standards), other product descriptions or documentation - also in electronic format - to which we retain title and copyrights.

(2) When the Buyer orders goods, this constitutes a binding contractual offer. Unless otherwise stated in the order, we are entitled to accept this contractual offer within three weeks of receipt.

(3) The offer is accepted in writing (e.g. via an order confirmation) or by delivery of the goods to the customer.

Section 3 - Delivery and delays

(1) The delivery date is agreed on an individual basis, or is specified by us when we accept the order. Otherwise, the delivery date is approximately three weeks from contract conclusion.

(2) If we are unable to meet a delivery deadline for reasons for which we are not responsible (service unavailability), we will inform the Buyer of this without undue delay, at the same time informing them of the expected new delivery date. If the service is also not available within this new delivery period, we are entitled to withdraw from the contract either in full or in part. In this case, the Buyer will be refunded for any payment already made without undue delay. Service unavailability in this sense particularly constitutes untimely delivery by our suppliers to us if we have entered into a congruent hedging transaction, where neither our suppliers nor us are at fault or we are not obligated to procurement on a case-by-case basis.

(3) Delivery deemed "delayed" is determined by legal provisions. However, in each case, a reminder from the customer is required to constitute a delay. If we default on delivery, the Buyer may request a fixed compensation amount for the damage caused by the delay. The fixed compensation amount for each full calendar week of the delay is 0.5% of the net price (delivery value), capped at 5% of the delivery value for the delayed goods. We reserve the right to prove that the Buyer has not incurred any damage or has only incurred significantly less damage than the above-mentioned fixed amount.

(4) The Buyer's rights under Section 8 of these T&Cs and our legal rights, with particular reference to the exclusion of the performance obligation (e.g. due to service unavailability or unacceptability and/or supplementary performance) remain unaffected.

Section 4 - Delivery, transfer or risk, acceptance and default on acceptance

(1) Delivery is made ex-warehouse, which is also the place of performance for the delivery and any supplementary performance. At the request of the Buyer and at the Buyer's expense, goods may be sent to a different destination (delivery sale). We are entitled to determine the type of delivery ourselves (with particular reference to transport companies, delivery route, packaging), unless otherwise agreed.

(2) The risk of accidental loss and accidental deterioration of the goods is transferred when the goods are transferred to the Buyer at the latest. However, for delivery sales, risk of accidental loss and accidental deterioration of the goods and the risk of delay is transferred when the goods are given to the carrier, the freight forwarder or otherwise to the person or establishment chosen to make delivery. If acceptance is agreed, this shall determine the transfer of risk. The legal provisions of the German law on contracts for work and services (Werkvertragsrecht) shall also apply to the agreed acceptance accordingly. The transfer or acceptance shall be deemed to have taken place if the Buyer defaults on acceptance.

(3) If the Buyer defaults on acceptance, fails to cooperate, or if our delivery is delayed for other reasons for which the Buyer is responsible, we are entitled to request compensation for damages resulting from this, including any additional expenses (e.g. storage costs). We charge a fixed compensation amount in the amount of €100 per calendar day, starting with the delivery date or - if there is no delivery date - starting with notification of when the goods are ready for dispatch.

Proof of greater damages and our legal claims (with particular reference to compensation for additional expenses, suitable compensation, termination) shall remain unaffected by this; however the fixed amount must be charged for further monetary claims. The Buyer is permitted to prove that we have not incurred any damage or have incurred significantly less damage than the above-mentioned fixed amount.

Section 5 - Prices and payment terms

(1) Unless otherwise agreed on a case-by-case basis, our prices applicable at the time of concluding the contract apply ex-warehouse, plus statutory VAT.

(2) For a delivery sale (Section 4(1)), the Buyer shall bear the transport costs ex-warehouse and the costs of any transport insurance requested by the Buyer, where applicable.

If we do not charge the transport costs actually incurred on a case-by-case basis, a fixed fee for transport costs shall apply (excluding transport insurance) in the amount of €15 for deliveries within Germany, €10 per 5kg of transport weight for deliveries within the European Union, and €10 per kilogram of transport weight for deliveries outside the European Union.

Any customs duties, charges, taxes and other statutory levies shall be borne by the Buyer.

(3) The purchase price is due for payment within 30 days of invoicing and delivery or acceptance of the goods. For contracts with a delivery value of more than €5,000, we are entitled to only make the delivery in full or in part with an advance payment of 50% of the purchase price. We shall provide notification of such a reservation with the order confirmation at the latest.

(4) The Buyer is in default if the above-mentioned payment deadline is not met. Interest is charged on the purchase price for the default period at the respectively applicable statutory interest rate. We reserve the right to assert further damages caused by delay. For businessmen, our claim to commercial maturity interest (Section 353 German Commercial Code) shall remain unaffected.

(5) The Buyer is only entitled to rights of set-off or retention if its claim is legally binding or undisputed. If delivery is defective, the Buyer's opposing rights, with particular reference to Section 7 Paragraph 6 Sentence 2 of these T&Cs, remain unaffected.

(6) If, after the contract is concluded, it becomes apparent (e.g. due to insolvency proceedings commencing) that our claim to the purchase price is compromised by defective performance by the Buyer, we are entitled to refuse the service pursuant to legal provisions and to withdraw from the contract (Section 321 German Civil Code), possibly also after setting a deadline. We may declare withdrawal from contracts concerning the manufacture of unacceptable items (customised products) with immediate effect; the statutory regulations concerning the superfluity of the deadline remain unaffected.

Section 6 - Retention of title

(1) We retain title to the goods sold until all of our current and future receivables from the purchase agreement and the ongoing business relationship (secured receivables) have been paid.

(2) Goods to which title is retained may not be pledged to third parties nor assigned for security before full payment is made for secured receivables. The Buyer must inform us in writing without undue delay if an application has been made for insolvency proceedings to commence or if third parties have access to goods belonging to us (e.g. seizure).

(3) If the Buyer behaves in a way that does not comply with the contract, with particular reference to non-payment of the purchase price due, we are entitled to withdraw from the contract in accordance with the legal provisions and/or demand that the goods are returned based on the retention of title. The demand does not also represent a declaration of withdrawal; we are further entitled to solely demand the goods and reserve the right to withdrawal. If the Buyer does not pay the purchase price due, we may only assert these rights if we have previously set the Buyer a reasonable deadline for payment and this has not been met, or such a deadline is superfluous pursuant to legal provisions.

(4) Under (c) below, the Buyer is authorised to resell goods subject to the retention of title as part of its ordinary course of business. In this case, the following provisions shall also apply.

(a) The Buyer shall assign the receivables from third parties relating to the onward sale of the goods to us for security. We shall accept the assignment. The Buyer's obligations outlined in Paragraph 2 shall also apply with respect to the assigned receivables.

(b) In addition to us, the Buyer shall remain authorised to collect receivables. We shall not collect receivables provided the Buyer meets its payment obligations to us, the performance is not defective, and we do not assert the retention of title by exercising a right under Paragraph 3. However, if this is the case, we may demand that the Buyer notifies us of the assigned receivables and the respective debtors, provides all of the information required for collection, provides all of the related documentation and notifies the debtor (third parties) of the assignment. In this case, we are also entitled to revoke the Buyer's authorisation to resell the goods subject to the retention of title.

(c) If the realisable value of the securities exceeds our receivables by more than 10%, at our discretion we will release securities at the Buyer's request.

Section 7 - Buyer claims for defects

(1) For Buyer rights concerning material defects and defects of title (including incorrect deliveries, shortfalls with deliveries and improper assembly and inadequate assembly instructions), legal provisions apply, unless otherwise specified in the following. Special statutory regulations for final delivery of the goods to the consumer shall remain unaffected in all cases (supplier recourse in accordance with Sections 478, 479 German Civil Code).

(2) Our liability for defects is mainly based on the agreement concerning the condition of the goods. All product descriptions that are the object of the individual contract or have been made publicly available by us (with particular reference to catalogues or on our homepage) shall be deemed agreements relating to the condition of the goods.

(3) If the condition has not been agreed, the legal provisions shall be used to determine whether there is a defect (Section 434 Paragraph 1 Sentences 2 and 3 German Civil Code). We assume no liability for public statements made by the manufacturer or other third parties (e.g. advertising).

(4) The Buyer's claims for defects require the Buyer's legal inspection obligation and requirement to give notice of defects (Sections 377, 381 German Commercial Code) to be met. If a defect is found upon delivery, inspection or at another later point in time, we must be informed of this in writing without undue delay. In any case, notification must be given in writing within 5 working days of delivery for obvious defects and within 5 working days of discovery for defects not visible. If the Buyer fails to carry out a proper inspection and/or fails to give notification of the defect, our liability for the defect for which no notification is given or for which notification is given late or notification is not properly given, is excluded under the legal provisions.

(5) If the delivered item is defective, we may initially choose to carry out supplementary performance by remedying the defect (repair) or by delivering a non-defective item (replacement delivery). Our right to refuse supplementary performance under the legal conditions shall remain unaffected.

(6) We are entitled to make the supplementary performance owed dependent on the Buyer paying the purchase price due. However, the Buyer is entitled to withhold a part of the purchase price that corresponds to extent of the defect.

(7) The Buyer must give us the time and opportunity required for supplementary performance owed, with particular reference to providing the disputed goods for inspection purposes. For replacement deliveries, the Buyer must return the defective items to us in accordance with the legal provisions.

(8) The expenses required for the purposes of inspection and supplementary performance, with particular reference to transportation, road, labour and materials costs, shall be borne by us if there is in fact a defect. Otherwise, we may request that the Buyer reimburses costs incurred by us in connection with the unauthorised request to remedy the defect (with particular reference to inspection and transportation costs), unless the lack of defect was not apparent to the Buyer.

(9) In urgent cases, e.g. if operational safety is compromised or in order to prevent excessive damage, the Buyer has the right to remedy the defect itself and request a refund for the expenses objectively required for this. We must be informed of such self-performance immediately, and in advance where possible. There is no right to self-performance if we would be entitled to refuse corresponding supplementary performance under the legal provisions.

(10) If supplementary performance fails or if a reasonable deadline for supplementary performance to be set by the Buyer is not met, or is superfluous in line with legal provisions, the Buyer may withdraw from the purchase agreement, or reduce the purchase price. However, there is no right of withdrawal for immaterial defects.

(11) Buyer claims for compensation for damages and/or compensation for wasted expenditure shall only apply to defects as well in accordance with Section 8, and shall otherwise be excluded.

Section 8 - Other Liability

(1) We are liable for breaches of contractual and non-contractual duties under the relevant legal provisions, unless otherwise regulated in these T&Cs, including the following provisions.

(2) Irrespective of the legal grounds, we are liable for compensation for damages for intent and gross negligence, within the context of liability in tort. In cases of simple negligence, we shall be liable subject to a milder degree of liability under the legal provisions (e.g. for diligence in a matter)

a) for damages resulting from injury to life, limb or health,

b) for damages resulting from the not insignificant breach of a material contractual duty (where proper execution of the agreement is only possible if such an obligation is fulfilled and the contracting partner may reasonably expect to rely on compliance with such an obligation); though in this case, our liability is limited to compensation for foreseeable, typically occurring damages.

(3) Limitation of liability resulting from Paragraph 2 shall also apply to breaches of duty by, or for the benefit of, persons for whose fault we are responsible under the legal provisions. They shall not apply if we have fraudulently concealed a defect or assumed a guarantee for the condition of the goods and for Buyer claims under product liability law.

(4) The Buyer is only entitled to withdrawal or termination due to a breach of duty that does not relate to a defect if we are responsible for the breach of duty. A free right of termination of the Buyer (with particular reference to that under Sections 651, 649 German Civil Code) is excluded. Legal conditions and legal consequences apply otherwise.

Section 9 - Statute of limitation

(1) Contrary to Section 438 Paragraph 1 No. 3 German Civil Code, the general limitation period for claims relating to material defects and defects of title shall be one year from delivery. If acceptance is agreed, the statute of limitation starts upon acceptance.

(2) The above-mentioned statute of limitation for the purchasing right shall also apply to the Buyer's contractual and non-contractual compensation claims for damages that are based on a defect, unless the application of the standard legal statute of limitation (Sections 195, 199 German Civil Code) would lead to a shorter statute of limitation period in particular cases. However, the Buyer's claims for compensation for damages pursuant to Section 8 Paragraph 2 Sentences 1 and 2(a) and in accordance with product liability law only lapse based on the legal statutes of limitation.

Section 10 - Applicable law and place of jurisdiction

(1) The law of the Federal Republic of Germany shall apply to these T&Cs and the contractual relationship between us and the Buyer, with the exclusion of international uniform law, with particular reference to the United Nations Convention on Contracts for the International Sale of Goods (CISG).

(2) If the Buyer is an entrepreneur within the meaning of German Commercial Law, a legal entity under public law or a special fund under public law, the exclusive place of jurisdiction - even on an international level - for all disputes that arise from the contractual relationship either directly or indirectly shall be our registered office in 25462 Rellingen. The same shall apply if the Buyer is an entrepreneur within the meaning of Section 14 German Civil Code. However, we are also entitled in all cases to take legal action in the place of performance for the delivery obligation in accordance with these T&Cs or an overriding individual agreement, or at the Buyer's general place of jurisdiction. Overriding legal provisions, with particular reference to exclusive jurisdictions, shall remain unaffected.

04th December 2019.

Changes and errors excepted. Similar pictures – dealer catalogue 2022 – 01.01.2022



MARUSHIN IN EUROPE :

Exclusive distributor for Finland & Sweden

smokehouse.fi
THEM products oy



Käsityökatu 34-36A, FI- 78210 Varkaus, Finland

Tel. +358 44 7476834

email: erik@smokehouse.fi

www.smokehouse.fi



www.marushin.de